



PATHWAYS2POSSIBILITIES

engage | educate | empower



CAREER

2024 EXPO

WASHINGTON COUNTY CONVENTION CENTER  
GREENVILLE, MISSISSIPPI  
FEBRUARY 28 & 29, 2024





Dear Parents,

We are "Proud" to return to Greenville, Mississippi to host the 7th Annual Pathways2Possibilities:P2P Mississippi Delta Career Expo 2024. Approximately 2,200 eighth graders will converge on the Washington County Convention Center located at 1040 South Raceway Road, Greenville, MS 38703 on February 28th & 29th. All eighth graders from public and private schools plus home-schooled students are invited to attend P2P from the following Mississippi Delta counties: **Bolivar, Carroll, Coahoma, Holmes, Humphreys, Issaquena, Leflore, Quitman, Sharkey, Sunflower, Tallahatchie, Washington, and Yazoo.**

P2P is a unique, hands-on, interactive, career exploration experience designed for eighth graders and older Opportunity Youth ages 16-24. Opportunity Youth are invited through a variety of alternative education and workforce development programs. They will experience P2P as the eighth graders depart to expo. P2P is intended to inspire your student/s to begin thinking about their future education and career choices.

We will feature sixteen career clusters/pathways aligned with the US and Mississippi Departments of Education. Each student will spend 90 minutes on the expo floor exploring and engaging with professionals who share what life is like in their jobs/careers in their respective fields. Students will gain insights into what their career future might look like, and the education, planning, and training required to achieve their goals.

You are encouraged to take time to review and discuss with your students/s, the career pathways outlined in this booklet. Each page lists jobs and careers within a specific profession, expected salary ranges plus the education and training required to obtain those positions. We are confident that this will be a beneficial, meaningful, and rewarding experience for all students, educators, and parent chaperones. It is our goal to engage, educate, and empower every student who attends P2P, by exposing them in middle school to the wide variety of career options available to them, in their home community, and across the great state of Mississippi.

Professionals from businesses and organizations as well as sponsors, funders and community volunteers come together to make P2P possible. When you see them at the career expo or in your community, please take time to thank them for their participation and support.

To learn more about P2P please visit: [www.pathways2possibilities.org](http://www.pathways2possibilities.org).

## **2024 Pathways2PossibilitiesP2P Mississippi Delta Career Expo 2024 Project Partners and P2P Planning Team:**

Mayor Errick, Simmons, City of Greenville, MS

Melanie Powell, Executive Director Community Foundation of Washington County, MS

Kyla Rice, Executive Assistant to the Mayor & Public Relations Director

Karen Sock, P2P Co-Founder & Project Manager, Biloxi, MS

Virginia Perkins, P2P Project Coordinator, Vicksburg, MS

Terri French, Exhibit Services Manager, Convention Display Service, Jackson, MS





# The **STATE OF MISSISSIPPI** and **ACCELERATE MISSISSIPPI**

proudly present:



## PRESENTING



## GOLD



**REGIONS**  
It's time to expect more.™



## SILVER



## BRONZE

*Judge Margaret Carey - McCray*

## PATRONS



**GuarantyBank**  
Member FDIC



**CBS Bank**  
Since 1906



**Harlow's**  
Casino Resort & Spa

**Planters Bank**  
FDIC

## EXPO PARTNERS & IN-KIND DONORS

Washington County  
Board of Supervisors  
City of Greenville





# INTERESTS & ABILITIES

- DETAIL-ORIENTED
- LIKES SCIENCE, MATH  
& TECHNICAL CONCEPTS
- PROBLEM SOLVING
- LIKES TEAMWORK
- STRONG MATH & SCIENCE SKILLS
- FOLLOWING DIRECTIONS



# AEROSPACE

In Aerospace careers, workers apply mathematical and scientific principles to the design, development and operational evaluation of aircraft, space vehicles and their systems; applied research on flight characteristics; and the development of systems and procedures for the launching, guidance and control of air and space vehicles.

CAREER OPTIONS		
HIGH SCHOOL DIPLOMA & TRAINING	Technical Customer Service	Non-Destructive Testing
	A & P Mechanic	Avionics Mechanic
	Fabricator	Inspector
	Production Machine Operator	Assembler
	Material Handler	
2+ YEARS POST-SECONDARY EDUCATION	Operations Technician	Mechanical Engineering Technician
4-YEAR+ DEGREE	Aerospace Engineer	Structure Engineer
	Quality Engineer	Manufacturing Engineer
	Business Unit Leader	Logistician
	Materials Engineer	

OCCUPATION	EDUCATION REQUIRED	ANNUAL SALARY RANGE
Quality Engineer	Engineering Degree	\$50,753 - \$93,041
Aerospace Engineer	Engineering Degree	\$70,840 - \$162,110
Structure Engineer	Engineering Degree	\$50,841 - \$112,545
Operations Technician	Associate's Degree	\$43,050 - \$102,960
Mechanical Engineering Technician	Associate's Degree	\$34,440 - \$85,230
Non-Destructive Testing	On-the-Job/ Technical Training	\$41,466 - \$53,821





## INTERESTS & ABILITIES

LIKES NATURE, SCIENCE  
& THE OUTDOORS

ORGANIZED

PUNCTUAL

DESIRE TO PROTECT  
& MANAGE THE WORLD'S  
RESOURCES

The Agriculture, Food and Natural Resources Career Pathway focuses on supporting life by ensuring that we are responsibly managing our food production and natural resources. These areas supply us and many other countries with a wide variety of food products and non-food products, such as fibers, natural resources and nursery items. These fields contribute positively to our foreign trade balance, and they remain some of the nation's larger industries in terms of total employment. This pathway focuses on preparing students for careers in the planning, implementing, producing, managing, processing and marketing of agricultural goods and services.

## CAREER OPTIONS

HIGH SCHOOL DIPLOMA & TRAINING	Landscaper	Animal Caretaker
	Fish and Wildlife Technician	Harvester
2+ YEARS POST-SECONDARY EDUCATION	Miller	Logging Equipment Operator
	Groundskeeper	
4-YEAR+ DEGREE	Animal Breeder	Lab Technician
	Hatchery Manager	Air & Quality Technician
	Veterinary Technician	
	Fish and Game Warden	Environmental Engineer
	Botanist	Forester
	Agriculture Manager	Oceanographer
	Veterinarian	

OCCUPATION	EDUCATION REQUIRED	ANNUAL SALARY RANGE
Veterinarian	Doctoral or Professional Degree	\$53,980 - \$159,320
Food Scientist	Master's Degree	\$37,890 - \$116,520
Forester	Bachelor's Degree	\$33,740 - \$97,490
Landscape Architect	Bachelor's Degree	\$40,480 - \$108,470
Agricultural Inspector	Bachelor's Degree	\$27,470 - \$65,130
Landscaper	High School Diploma	\$20,092 - \$44,824
Logging Equipment Operator	High School Diploma	\$24,160 - \$57,800

Student Organization: Future Farmers of America • [www.ffa.org](http://www.ffa.org)

# INTERESTS & ABILITIES

- GOOD WITH HANDS & TOOLS
- STRONG MATH & SCIENCE SKILLS
- GOOD TIME MANAGEMENT SKILLS
- TEAM PLAYER



Houses, apartments, factories, roads and bridges are some products of Architecture and Construction. This industry’s activities include designing and building structures, including site preparation, as well as adding and modifying existing ones. The industry includes landscaping, maintenance, repair and improvements of structures. To offset rising energy costs, some companies opt for new buildings or energy efficient renovations. “Green construction” is increasingly popular and involves making buildings as environmentally friendly as possible by using recyclable and earth-friendly products. Construction offers career opportunities for people with different talents and educational backgrounds. Career opportunities include managers, clerical workers, accountants, engineers, truck drivers, trades workers and construction helpers. This pathway prepares students for careers in designing, planning, managing, building and maintaining built environments. People employed in architecture and construction work on new structures, restorations, additions, alterations and repairs.

CAREER OPTIONS		
HIGH SCHOOL DIPLOMA & TRAINING	Carpenter	Rodbuster
	Enlisted Navy Seabee	Welder
2+ YEARS POST-SECONDARY EDUCATION	Elevator Repair & Installer	HVAC Mechanic
	Electronic Technician	Construction Supervisor
	Mason	Designer
	Electrician	Plumber
4-YEAR+ DEGREE	Drafting Technician	Boilermaker
	Cost Estimator	Project Manager
	Navy Seabee Officer	Interior Designer
	Surveyor	Architect
	Electrical Engineer	Landscape Architect
	Cost Estimator	Construction Manager,
	Civil Engineer	Drafter/Designer

OCCUPATION	EDUCATION REQUIRED	ANNUAL SALARY RANGE
Architect	Bachelor’s Degree	\$47,480 - \$134,610
Surveyor	Bachelor’s Degree	\$34,470 - \$100,420
Interior Designer	Bachelor’s Degree	\$27,240 - \$93,780
Drafter/Designer	Associate’s or Bachelor’s Degree	\$34,350 - \$84,180
Boilermaker	On-the-Job Training/Post-Secondary Education	\$38,700 - \$87,160
Brickmason	On-the-Job Training/Post-Secondary Education	\$27,750 - \$76,020
Carpenter	High School Diploma	\$27,790 - \$80,350



## INTERESTS & ABILITIES

TIME MANAGEMENT SKILLS  
STRONG ORAL & WRITTEN  
COMMUNICATIONS  
LIKES PEOPLE  
ENJOYS POLITICAL SCIENCE  
& CURRENT AFFAIRS  
SELF-CONFIDENT  
PROFICIENT IN ENGLISH

Information, communication, technology and rapid change are leading forces in the 21st century. These fields combine artistic expression and individual style with in-depth understanding of today's state-of-the-art technologies. Strong communication and presentation skills make these career choices rewarding and profitable. Flexibility and innovation are commodities of the times. In today's creative economy, the arts provide training and service for a workforce driven by innovation and communication. This career pathway focuses on courses of study that develop collaborative skills, creative thinking and an appreciation for diversity. The creative sector includes activities of nonprofit cultural organizations, commercial enterprises and professionals engaged in the applied arts. This career pathway covers arts, communication and design avenues, including the performing arts, fine art, graphic art, design industries, the film and movie industry, broadcast journalism, corporate communications, social media and public relations.

### CAREER OPTIONS

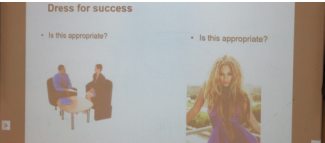
HIGH SCHOOL DIPLOMA & TRAINING	Production Assistant Actor Illustrator Jeweler	Web Designer Media Aide Dancer	Composer Graphic Assistant Singer
2+ YEARS POST-SECONDARY EDUCATION	Copywriter Visual Effects Artist Videographer	Art Restorer Radio Announcer	Sound Editor Cosmetologist
4-YEAR+ DEGREE	Curator Animator Fashion Designer	Graphic Designer Editor Reporter	Music Director Creative Director

OCCUPATION	EDUCATION REQUIRED	ANNUAL SALARY RANGE
Art Curator	Graduate Degree	\$26,260 - \$85,350
Film and Video Editor	Bachelor's Degree	\$25,580 - \$102,980
Reporter	Bachelor's Degree	\$26,510 - \$195,520
Art Teacher	Bachelor's Degree	\$35,120 - \$134,000
Graphic Designer	Bachelor's Degree	\$28,560 - \$83,140
Performing Arts Program Director	Bachelor's Degree	\$33,730 - \$164,290
Radio Announcer	Associate's Degree	\$18,330 - \$81,410
Cosmetologist	On-the-Job Training /Post-Secondary Education	\$18,616 - \$48,484
Craft or Fine Artist	High School Diploma	\$22,630 - \$101,120

Student Organization: SkillsUSA • [www.skillsusa.org](http://www.skillsusa.org)

# INTERESTS & ABILITIES

ENJOYS DRESSING  
PROFESSIONALLY  
EXCELLENT  
INTERPERSONAL SKILLS  
DETAIL-ORIENTED  
STRONG PUBLIC SPEAKING,  
ENGLISH & MATH SKILLS



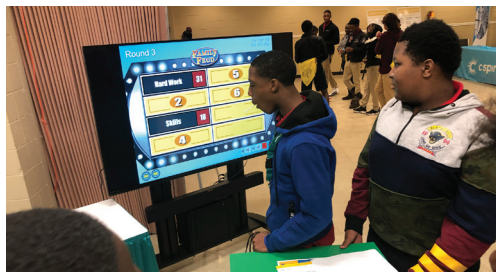
Workers with the skill sets necessary for efficient Business Management and Administration operations fuel U.S. enterprises. Rewarding careers in this area of study can lead to a myriad of different companies and markets. Business Management and Administration professionals plan, direct, maintain and organize business operations for an organization. Business fundamentals serve as the foundation for all business pathways. Courses in business provide instruction in basic business skills and knowledge related to economic fundamentals, management, communications, finance, human relations, career development, ethics and business etiquette. This pathway prepares students for careers in planning, organizing, directing and evaluating business functions essential to efficient and productive business operations.

## CAREER OPTIONS

HIGH SCHOOL DIPLOMA & TRAINING	Entrepreneur Data Entry Clerk	Property, Real Estate & Community Assoc. Manager Cashier
2+ YEARS POST-SECONDARY EDUCATION	Administrative Services Manager Records Manager Training Specialist	Realtor Bookkeeper Administrative Assistant
4-YEAR+ DEGREE	Human Resources Specialist Chief Executive	Operations Research Analyst Labor Relations Specialist

OCCUPATION	EDUCATION REQUIRED	ANNUAL SALARY RANGE
Chief Executive	Master's Degree	\$68,110 - \$208,000
Labor Relations Specialist	Bachelor's Degree	\$18,820 - \$116,480
Compensation /Benefits Manager	Bachelor's Degree	\$68,510 - \$202,590
Human Resources Specialist	Bachelor's Degree	\$35,810 - \$103,570
Operations Research Analyst	Bachelor's Degree	\$45,270 - \$134,470
Administrative Assistant	On-the-Job Training/ Post-Secondary Education	\$23,650 - \$62,870
Receptionist	High School Diploma	\$20,072 - \$40,872
Property, Real Estate,& Community Association Manager	High School Diploma	\$29,500 - \$128,630





## INTERESTS & ABILITIES

STRONG ORGANIZATIONAL SKILLS

EXCELLENT PUBLIC SPEAKING SKILLS

ENJOYS WORKING WITH PEOPLE



A vital part of everyone's life, Education is the future of our economy. The amount and type of education that individuals receive is a major influence on both the jobs they are able to hold and their earnings. Lifelong learning is important in acquiring new knowledge and upgrading one's skills, particularly in this age of rapid technological and economic change. This pathway focuses on preparing students for work in a variety of institutions that offer academic education, career and technical instruction, and other education and training to millions of students each year. This industry also includes institutions that provide training, consulting and other support services to schools and students, such as curriculum development, student exchanges and tutoring. Also included are schools or programs that offer non-academic or self-enrichment classes, including automobile driving and cooking instruction, among others.

## CAREER OPTIONS

HIGH SCHOOL DIPLOMA & TRAINING	Teacher's Aide	Substitute Teacher
2+ YEARS POST-SECONDARY EDUCATION	Teacher's Assistant	
4-YEAR+ DEGREE	Teacher Audiologist Coach Speech Language Pathologist	Librarian Administrator Training & Development Manager Principal

OCCUPATION	EDUCATION REQUIRED	ANNUAL SALARY RANGE
Audiologist	Doctoral Degree	\$51,300 - \$111,150
Librarian	Master's Degree	\$34,300 - \$91,620
Speech Language Pathologist	Master's Degree	\$48,830 - \$118,910
Principal	Master's Degree	\$60,760 - \$140,780
Teacher	Bachelor's Degree	\$38,540 - \$91,670
Training & Development Specialist	Bachelor's Degree	\$59,170 - \$187,670
Teacher's Assistant	Associate's Degree	\$18,460 - \$39,780

Student Organization: Educators Rising • [www.educatorsrising.org](http://www.educatorsrising.org)  
Family, Career and Community Leaders of America • [www.fcclainc.org](http://www.fcclainc.org)



## INTERESTS & ABILITIES

GOOD FOUNDATION  
IN MATH & TECHNICAL  
CONCEPTS

SELF-MOTIVATED

DETAIL-ORIENTED

LIFELONG LEARNING  
COMMITMENT

ENJOYS TEAMWORK



ENERGY

Each day of our lives is centered on Energy. Without energy, your morning would be very different—no alarm clock, hot water, hair dryer, stove, air conditioning, television or car. All of these appliances and devices depend on natural gas, electricity or oil. Challenges lie ahead about how we provide energy reliably in a growing world while minimizing negative impacts on the environment.

## CAREER OPTIONS

ON-THE-JOB TRAINING/ TWO-YEAR DEGREE PREFERRED	Maintenance & Repair Line Maintenance Plant Operator Machinists	Fabrication Mechanic Nuclear Technician Instrument & Electrical Technician
	Nuclear Engineer	Engineering

OCCUPATION	EDUCATION REQUIRED	ANNUAL SALARY RANGE
Nuclear Engineer	Bachelor's Degree	\$66,400 - \$159,330
Machinists	On-the-Job Training/ Two-Year Degree Preferred	\$26,430 - \$63,790
Instrument & Electrical Technician	On-the-Job Training/ Two-Year Degree Preferred	\$37,420 - \$93,810
Plant Operator	On-the-Job Training/ Two-Year Degree Preferred	\$49,210 - \$108,240
Nuclear Technician	On-the-Job Training/ Two-Year Degree Preferred	\$48,110 - \$112,390
Fabrication Mechanic	On-the-Job Training/ Two-Year Degree Preferred	\$21,270 - \$53,120
Line Maintenance	On-the-Job Training/ Two-Year Degree Preferred	\$37,600 - \$99,860
Maintenance & Repair	On-the-Job Training/ Two-Year Degree Preferred	\$22,820 - \$61,720

Student Organization: SkillsUSA • [www.skillsusa.org](http://www.skillsusa.org)



## INTERESTS & ABILITIES

STRONG ATTENTION TO DETAIL  
STRONG MATH & SCIENCE SKILLS  
ENJOYS SCIENCE



Almost everything you see was designed by engineers or designers before being constructed. High-rise buildings, bridges and spaceships require the expertise of architects, engineers and designers. If you are interested in being part of something like designing a condo on the beach, or designing a ship, airplane or electronic device, consider a career in engineering or design. A successful career in this high-tech field requires people who are willing to take risks and question learning in order to discover and uncover new possibilities. Positions are available in a wide variety of workplaces, including hospitals, government agencies, corporate research and development departments, forensic laboratories and scientific classrooms.

### CAREER OPTIONS

HIGH SCHOOL DIPLOMA & TRAINING	Hazardous Materials Removal Worker	Mapping Technician	Engineering Technician
2+ YEARS POST-SECONDARY EDUCATION	Chemical Technician	Mechanic	Drafter
		Electro-mechanical Technician	
4-YEAR+ DEGREE	Technical Writer	Polymer Scientist	Industrial Engineer
	Computer Systems Analyst	Civil Engineer	Polymer Scientist
	Chemist	Nuclear Engineer	Engineering Manager

OCCUPATION	EDUCATION REQUIRED	ANNUAL SALARY RANGE
Engineering Manager	Graduate Degree Preferred	\$88,050 - \$208,000
Civil Engineer	Bachelor's Degree	\$54,150 - \$138,110
Computer Systems Analyst	Bachelor's Degree	\$53,750 - \$139,850
Industrial Engineer	Bachelor's Degree	\$55,230 - \$130,930
Polymer Scientist	Bachelor's Degree	\$42,960 - \$130,560
Technical Writer	Bachelor's Degree	\$42,410 - \$113,810
Drafter	Associate's Degree	\$34,350 - \$84,180
Chemical Technician	Associate's Degree	\$28,960 - \$78,350
Mapping Technician	High School Diploma	\$26,670 - \$71,440
Hazardous Materials Removal Worker	High School Diploma	\$26,880 - \$75,160

Student Organization: Technology Student Association • [www.tsaweb.org](http://www.tsaweb.org)



# INTERESTS & ABILITIES

HIGHLY ORGANIZED  
STRONG IN MATH, ENGLISH  
& COMPUTER SKILLS  
GOOD ATTENTION TO DETAIL



# FINANCE

The Finance industry deals with the management, investment, transfer and lending of money. Every company utilizes money, and the finance area is responsible for the handling of those funds. The industry itself is very large, encompassing everything from small local businesses and banks to the multinational corporations and investment banks regularly featured in news headlines. The finance career pathway prepares students for careers in financial and investment planning, banking, insurance and business financial management. There are several fields of study in this pathway, including corporate finance, financial planning, investment banking, insurance and real estate.

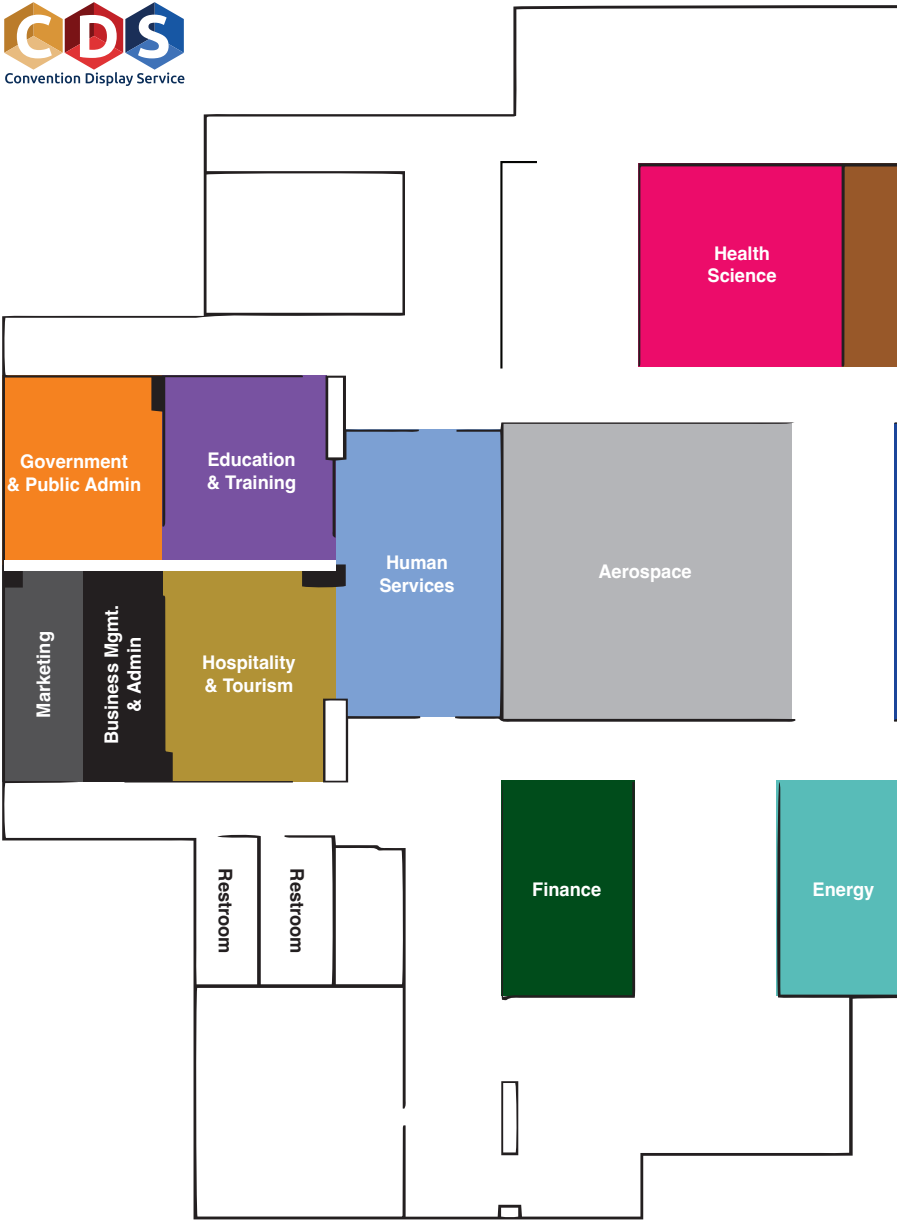
## CAREER OPTIONS

HIGH SCHOOL DIPLOMA & TRAINING	Teller	Claims Adjuster	Customer Service Representative
	Insurance Appraiser	Real Estate Broker	
2+ YEARS POST-SECONDARY EDUCATION	Bookkeeping Clerk	Credit/Debt Counselor	Claims Agent
	Tax Preparer	Loan Processor	
4-YEAR+ DEGREE	Accountant	Insurance Agent	Financial Advisor
	Actuary	Auditor	

OCCUPATION	EDUCATION REQUIRED	ANNUAL SALARY RANGE
Accountant	Bachelor's Degree	\$43,020 - \$122,220
Actuary	Bachelor's Degree	\$59,950 - \$184,77
Financial Advisor	Bachelor's Degree	\$40,800 - \$208,000
Credit/Debt Counselor	On-the-Job Training/Post-Secondary Education	\$29,780 - \$76,190
Bookkeeping Clerk	On-the-Job Training/Post-Secondary Education	\$24,600 - \$60,670
Real Estate Broker	High School Diploma/State Licensing Courses	\$24,160 - \$151,660
Claims Adjuster	High School Diploma	\$38,930 - \$97,080
Customer Service Representative	High School Diploma	\$21,361 - \$54,329
Teller	High School Diploma	\$21,360 - \$38,330



Convention Display Service





# EVENT MAP



## DELTA 2024





## INTERESTS & ABILITIES

GOOD TIME MANAGEMENT  
 DESIRE TO HELP OTHERS  
 STRONG ENGLISH & PUBLIC  
 SPEAKING SKILLS  
 ETHICAL  
 ENJOYS LEADING &  
 TEAMWORK  
 ORGANIZED



The field of Government and Public Administration provides ample opportunity to help one's fellow citizens. These jobs are vital to ensure governmental services reach the American people. Many of these positions facilitate assistance to citizens and conduct activities that are critical to the function of American society. Employees in government or public administration careers work to keep our society running and functioning in ways that are nearly invisible to most people. For instance, some of these tasks include safeguarding national borders and supporting diplomatic missions, as well as planning urban developments, administering public programs and analyzing tax policies. This pathway includes careers in governance, national security, foreign service, planning, revenue and taxation, regulation and management and administration at the local, state and federal levels.

## CAREER OPTIONS

HIGH SCHOOL DIPLOMA & TRAINING	Postmaster Compliance Officer	Census Clerk	County Roads Laborer
2+ YEARS POST-SECONDARY EDUCATION	City Code Enforcement Officer Nuclear Quality Control Inspector	Quality Control Inspector	County Senior Resources Aide
4-YEAR+ DEGREE	City Parks & Recreation Director State Auditor	State Forester State Emergency Director	County Tax Collector Urban & Regional Planner

OCCUPATION	EDUCATION REQUIRED	ANNUAL SALARY RANGE
Urban and Regional Planner	Master's Degree	\$44,680 - \$108,170
Foreign Service Officer	Master's Degree	\$55,414 - \$128,150
County Administrator	Bachelor's Degree	\$43,288 - \$147,114
State Emergency Management Director	Bachelor's Degree	\$38,270 - \$141,620
Budget Analyst	Budget Analyst	\$49,540 - \$113,740
City Parks and Recreation Director	Bachelor's Degree	\$31,421 - \$96,661
Highway Maintenance Worker	High School Diploma	\$25,220 - \$57,990
Building Inspector	High School Diploma	\$35,220 - \$95,340

Student Organization: Future Business Leaders of America • [www.fbld-pbl.org](http://www.fbld-pbl.org)  
 Family, Career and Community Leaders of America • [www.fcclainc.org](http://www.fcclainc.org)



# INTERESTS & ABILITIES

STRONG MATH, SCIENCE &  
COMPUTER SKILLS  
DETAIL-ORIENTED  
DESIRE TO HELP OTHERS  
INTERPERSONAL SKILLS



Healthcare is the fastest growing industry in the U.S. Technological advances have made new procedures and methods of diagnosis and treatment possible. Clinical developments, such as infection control, less invasive surgical techniques, advances in reproductive technology and gene therapy for cancer treatment, increase longevity and improve the quality of life for many people. Advances in information technology improve patient care and worker efficiency. Information on vital signs and orders for tests are transferred electronically, eliminating the need for paper and reducing record keeping errors. Healthcare students prepare for careers promoting health and wellness and diagnosing and treating injuries and diseases. Some careers involve working with people and others involve researching disease or collecting and formatting data and information. Settings include hospitals, medical offices, laboratories, communities, sports arenas or cruise ships.

CAREER OPTIONS			
HIGH SCHOOL DIPLOMA & TRAINING	Medical Coder Specialist	Emergency Medical Technician	Phlebotomist
	Nurse Assistant	Admitting Clerk	Sonographer
	Massage Therapist	Nurse Assistant	Home Health Aide
2+ YEARS POST-SECONDARY EDUCATION	Registered Nurse	X-Ray Technician	Funeral Director
	Respiratory Therapist	Dental Hygienist	Medical Laboratory Technician
4-YEAR+ DEGREE	Dentist	Nutritionist	Chiropractor
	Physical Therapist	Physician	Pharmacist
	Occupational Therapist		

OCCUPATION	EDUCATION REQUIRED	ANNUAL SALARY RANGE
Dentist	Doctorate/First Professional Degree	\$70,000 - \$208,000
Physical Therapist	Doctorate	\$59,080 - \$122,650
Pharmacist	Doctorate	\$87,420 - \$159,410
Respiratory Therapist	Associate's Degree	\$43,120 - \$83,030
X-Ray Technician	Associate's Degree	\$48,600 - \$97,460
Phlebotomist	On-the-Job Training/Post-Secondary Education	\$24,250 - \$48,030
EMT or Paramedic	High School Diploma/Post-Secondary Education	\$21,880 - \$56,990
Nurse Assistant	High School Diploma/Training	\$20,680 - \$38,630

Student Organization: Health Occupations Students of America • [www.hosa.org](http://www.hosa.org)



## INTERESTS & ABILITIES

PEOPLE-PERSON  
STRONG COMMUNICATION  
SKILLS  
ENJOYS DRESSING  
PROFESSIONALLY

As long as people have free time, they will pursue leisure activities. As leisure time and personal incomes grow across the nation, so will the hospitality industry. Leisure activities include theatrical activities, such as attending a cinema for a movie; going to a community theater for a play; enjoying gaming entertainment offered by casinos; or taking part in sporting activities, such as kayaking, tennis or surfing. Food services, restaurants and cocktail establishments are a widespread and familiar category within this industry. People travel for a variety of reasons, including vacations, business and visits to friends and relatives. Many travelers stay in hotels and seek accommodations while out of town. Resort and casino hotels offer activities to keep travelers and families occupied during their stay. This industry includes physical fitness facilities that feature exercise programs, gyms, health clubs and spas. This pathway introduces students to management, marketing and operation of restaurants, as well as lodging establishments and tourist attractions.

## CAREER OPTIONS

HIGH SCHOOL DIPLOMA & TRAINING	Maintenance Technician	Spa Services Technician	Concierge
	Translator	Cook	Banquet Server
2+ YEARS POST-SECONDARY EDUCATION	Gaming Services Worker	Groundskeeper	
	First-Line Supervisor of Housekeeping	Front Desk Clerk	Ticketing Agent
4-YEAR+ DEGREE	Meeting, Convention & Event Planner	Director of Hotel	Golf Course General Manager
	Executive Chef	General Manager	

OCCUPATION	EDUCATION REQUIRED	ANNUAL SALARY RANGE
Director of Hotel	Bachelor's Degree	\$28,930 - \$98,370
Golf Course General Manager	Bachelor's Degree	\$27,580 - \$105,704
Front Desk Clerk	Associate's Degree	\$17,670 - \$32,810
Cook	High School Diploma/ Post-Secondary Education	\$18,096 - \$35,505
Gaming Services Worker	High School Diploma	\$17,170 - \$58,060
Banquet Server	High School Diploma	\$17,118 - \$28,288
Food Service Manager	High School Diploma	\$29,850 - \$90,290

Student Organization: SkillsUSA • [www.skillsusa.org](http://www.skillsusa.org)  
Family, Career & Community Leaders of America • [www.fcclainc.org](http://www.fcclainc.org)



# INTERESTS & ABILITIES

COMPASSIONATE  
ENJOYS WORKING WITH PEOPLE  
PATIENT  
STRONG ENGLISH & PUBLIC  
SPEAKING SKILLS



The Human Services field relates to family and human needs. The work environment could vary from public schools to private child-care centers to personal households. At times, people need assistance to live full and productive lives. People need assistance finding a job, locating safe and adequate housing or getting nutritious food for their families. Human services help individuals and families become healthy and productive members of society. Assistance establishments provide services that include helping the homeless, counseling troubled individuals, training the unemployed and helping families obtain aid. Individuals in this industry work to improve the lives of the people they serve and to enrich communities. The services provided vary greatly, depending on the local population and its needs. This pathway prepares students for careers in social service agencies, community and civic organizations, child care and charities.

## CAREER OPTIONS

HIGH SCHOOL DIPLOMA & TRAINING	Fitness Trainer	Childcare Worker	
2+ YEARS POST-SECONDARY EDUCATION	Research Aide	Preschool Teacher	Cosmetologist
4-YEAR+ DEGREE	Social Worker	Counselor	Clinical Psychologist
	Family Therapist	Community Service Manager	

OCCUPATION	EDUCATION REQUIRED	ANNUAL SALARY RANGE
Family Therapist	Master's Degree	\$31,390 - \$81,760
Psychologist	Master's Degree	\$42,330 - \$124,520
Rehabilitation Counselor	Master's Degree	\$22,040 - \$62,780
Social and Community Service Manager	Bachelor's Degree	\$39,730 - \$109,990
Social Worker	Bachelor's Degree	\$29,560 - \$79,740
Funeral Service Worker	Associate's Degree	\$39,940 - \$153,340
Preschool Teacher	Associate's Degree	\$19,970 - \$54,780
Cosmetologist	On-the-Job Training/Post-Secondary Education	\$18,616 - \$48,484
Fitness Trainer	On-the-Job Training/Post-Secondary Education	\$19,640 - \$74,520
Childcare Worker	High School Diploma	\$17,492 - \$32,780

Student Organization: Family, Career & Community Leaders of America • [www.fcclainc.org](http://www.fcclainc.org)





## INTERESTS & ABILITIES

STRONG ENGLISH,  
MATH & COMPUTER SKILLS  
ENJOYS TEAMWORK  
PROBLEM SOLVER



Information Technology (IT) careers are available in every sector of the economy. IT manages the information and applications that office workers rely on to do their jobs. Careers in IT involve the design, development, support and management of hardware, software, multimedia and systems-integration services. The IT industry is a dynamic and entrepreneurial field continuing to have a revolutionary impact on the U.S. and world economies. IT specialists create products and set up and maintain systems. IT professionals focus on improving the usability and efficiency of technological systems and processes. Students in this pathway gain the basic foundation, skills and knowledge for computer networking, applications and support, along with an introduction to programming. Students develop skills to prepare for certification exams and learn to develop, support and integrate computing systems. They acquire network planning and management skills and the ability to provide technical support.

## CAREER OPTIONS

HIGH SCHOOL DIPLOMA & TRAINING	Repair Assistant	Cable Installer	Personal Computer Technician
2+ YEARS POST-SECONDARY EDUCATION	Computer Support Specialist Web Developer	Network Technician Programmer	Audio-Visual Installer
4-YEAR+ DEGREE	Network Administrator Information Systems Manager	Software Developer Systems Engineer	Network Analyst

OCCUPATION	EDUCATION REQUIRED	ANNUAL SALARY RANGE
Information Systems Manager	Bachelor's Degree	\$83,860 - \$208,000
Software Developer	Bachelor's Degree	\$59,870 - \$160,100
Network Administrator	Bachelor's Degree	\$49,830 - \$130,200
Computer Support Specialist	Associate's Degree	\$36,960 - \$105,230
Web Developer	Associate's Degree	\$36,830 - \$122,320
Broadcast & Sound Engineering Technician	Post-Secondary Education	\$23,160 - \$85,340
Cable Installer	High School Diploma	\$37,600 - \$99,860

Student Organization: Technology Student Association • [www.tsaweb.org](http://www.tsaweb.org)



# INTERESTS & ABILITIES

- ENJOYS TEAMWORK
- ETHICAL
- GOOD TIME MANAGEMENT
- HIGHLY ORGANIZED
- STRONG ORAL & WRITTEN COMMUNICATION
- FOLLOWS RULES & DIRECTIONS



The fields of Law, Public Safety, Corrections and Security involve planning, managing and providing legal, public safety, protective and homeland security services and also include the professional and technical-support assistance of personnel within these fields. Careers in this field involve serving and/or protecting our citizens. Law, public safety, corrections and security workers are found in a variety of settings. This pathway prepares students for careers in such areas as criminology, legal studies, forensics and psychology.

## CAREER OPTIONS

HIGH SCHOOL DIPLOMA & TRAINING	Security Guard	Emergency Management Specialist	Jailer
	Animal Control Worker	Fire Inspector	Police Officer
2+ YEARS POST-SECONDARY EDUCATION	Dispatcher	Bailiff	Lifeguard
	Immigration & Customs Inspector	Court Reporter	Parole Officer
4-YEAR+ DEGREE	Paralegal	Mediator	
	Park Ranger	Judge	FBI Agent
	Attorney	Forensic Science Technician	Loss Prevention Manager

OCCUPATION	EDUCATION REQUIRED	ANNUAL SALARY RANGE
Attorney	First Professional Degree	\$57,430 - \$208,000
Forensic Science Technician	Bachelor's Degree	\$33,880 - \$95,600
Paralegal and Legal Assistant	Associate's Degree	\$31,130 - \$81,180
Firefighter	High School Diploma & Training	\$24,490 - \$83,570
Emergency Management Director	High School Diploma & Training	\$38,270 - \$141,620
Correctional Officer and Bailiff	High School Diploma & Training	\$23,950 - \$74,060
Fire Inspector	High School Diploma & Training	\$34,800 - \$95,960
Police Officer	High School Diploma & Training	\$35,780 - \$105,230

Student Organization: SkillsUSA • [www.skillsusa.org](http://www.skillsusa.org)  
Family, Career & Community Leaders of America • [www.fcclainc.org](http://www.fcclainc.org)



## INTERESTS & ABILITIES

ENJOYS TEAMWORK  
STRONG MATH  
& TECHNICAL SKILLS  
TIME MANAGEMENT SKILLS  
DETAIL-ORIENTED  
LIKES TO FOLLOW  
& GIVE INSTRUCTION

Manufacturing is one of the oldest industries in the technological world. Manufacturing industries are the chief wealth-producing sectors of an economy. Manufacturing employs a huge share of the labor force and produces materials required by sectors of strategic importance, such as national infrastructure and defense. This pathway includes careers that manufacture products, maintain production facilities and improve the production process.

## CAREER OPTIONS

HIGH SCHOOL DIPLOMA & TRAINING	Service Advisor Pipefitter Auto Body Tech	Rigger Welder Body Shop Manager	Sheet Metal Worker Painter
2+ YEARS POST-SECONDARY EDUCATION	Plant Supervisor	Fabricator Mechanic	Precision Machinist
4-YEAR+ DEGREE	Electrical Engineer Chemical Engineer	Quality Control Engineer Production Engineer	Mechanical Engineer

OCCUPATION	EDUCATION REQUIRED	ANNUAL SALARY RANGE
Health and Safety Engineer	Bachelor's Degree	\$51,820 - \$139,630
Electrical Engineer	Bachelor's Degree	\$60,250 - \$150,340
Industrial Production Manager	Bachelor's Degree	\$61,360 - \$168,780
Chemical Engineer	Bachelor's Degree	\$62,230 - \$169,080
Painter	Apprenticeship/On-the-Job Training	\$25,200 - \$63,620
Welder	Apprenticeship/On-the-Job Training	\$27,460 - \$63,170
Machinist	High School Diploma/On-the-Job Training	\$26,430 - \$63,790
Industrial Machinery Mechanic	High School Diploma/On-the-Job Training	\$32,280 - \$76,940

Student Organization: SkillsUSA • [www.skillsusa.org](http://www.skillsusa.org)



# INTERESTS & ABILITIES

ENJOYS DRESSING  
PROFESSIONALLY  
CREATIVITY  
EXCELLENT  
TIME MANAGEMENT SKILLS  
STRONG COMMUNICATION,  
MATH & TECHNICAL SKILLS  
ORGANIZED



# MARKETING

Advertisements in the newspaper, TV commercials, jingles on the radio, grocery store posters, bumper stickers, e-mail ads and Web sites are created as part of marketing campaigns to entice consumers to buy products. Marketing is the link between an organization and its target audience, which includes customers, clients, investors and partners. Marketers create, manage, enhance and sell products and services so that they reflect well on the company's brand. A key part of a marketer's job is to understand the needs, preferences and constraints that define the targeted consumers corresponding to the brand. This career pathway is a good fit for people who are creative or number-minded statisticians with the ability to communicate persuasively, to "think on their feet," to use tact, to employ good judgment and to establish and maintain effective relationships with people at all levels within and outside the company.

## CAREER OPTIONS

HIGH SCHOOL DIPLOMA & TRAINING	Telemarketer	Customer Service Representative	Order Clerk
	Product Demonstrator		
2+ YEARS POST-SECONDARY EDUCATION	Retail Sales Worker	Sales Agent	
4-YEAR+ DEGREE	Event Planner	Media Coordinator	Marketing Consultant
	Public Relations/Social Media Specialist	Advertising Manager	Market Research Analyst

OCCUPATION	EDUCATION REQUIRED	ANNUAL SALARY RANGE
Survey Researcher	Master's Degree	\$27,000 - \$100,660
Advertising Manager	Bachelor's Degree	\$48,150 - \$208,000
Market Research Analyst	Bachelor's Degree	\$34,510 - \$122,770
Public Relations/Social Media Specialist	Bachelor's Degree	\$32,840 - \$112,260
Graphic Designer	Bachelor's Degree	\$28,560 - \$83,140
Sales Agent	On-the-Job Training/Post-Secondary Education	\$24,320 - \$108,700
Retail Sales Worker	On-the-Job Training/Post-Secondary Education	\$19,198 - \$52,332
Customer Service Representative	High School Diploma/On-the Job Training	\$21,361 - \$54,329







## INTERESTS & ABILITIES

STRONG COMPUTER SKILLS  
ATTENTION TO DETAIL  
EXCELLENT  
TIME MANAGEMENT SKILLS  
ORGANIZED



Transportation, Distribution, and Logistics (TDL) relates to how goods are moved from one place to another. As far as goods and services are concerned, our world is flat. TDL takes care of how we get Mississippi farm-raised catfish to Europe and how the latest Paris styles arrive in the United States. TDL industries need motivated people with new ideas to ensure the U.S. transportation system continues to work efficiently. This pathway includes the planning, management and movement of people, materials and products by road, air, rail and water. It also includes related professional and technical services, such as infrastructure planning and management, logistics and maintenance of equipment and facilities.

### CAREER OPTIONS

HIGH SCHOOL DIPLOMA & TRAINING	Crane Operator	Service Attendant	Air Traffic Controller
	Railroad Conductor	Truck & Ship Loader	
2+ YEARS POST-SECONDARY EDUCATION	Flight Attendant	Mechanic	Commercial Pilot
	Operations Technician		
4-YEAR+ DEGREE	Ship Engineer	Airport Manager/ Director	

OCCUPATION	EDUCATION REQUIRED	ANNUAL SALARY RANGE
Marine Engineer and Naval Architect	Bachelor's Degree	\$63,980 - \$145,550
Logistician	Bachelor's Degree	\$44,820 - \$120,120
Air Traffic Controller	Associate's Degree	\$67,440 - \$175,800
Railroad Worker	On-the-Job Training	\$41,690 - \$92,280
Flight Attendant	On-the-Job Training	\$26,860 - \$79,520
Commercial Pilot	Training/College Preferred	\$68,230 - \$208,000
Truck & Ship Loader	High School Diploma/On-the-Job Training	\$23,700 - \$66,180
Equipment Operator	High School Diploma/On-the-Job Training	\$29,710 - \$81,640

Student Organization: SkillsUSA • [www.skillsusa.org](http://www.skillsusa.org)  
Family, Career & Community Leaders of America • [www.fcclainc.org](http://www.fcclainc.org)



## AEROSPACE

NASA

Greenville Kearns Aerospace Maintenance, Inc.  
Southern University at Shreveport - Aviation

## AGRICULTURE FOOD & NATURAL RESOURCES

Bayer

Mississippi State University Coastal Research  
2nd Extension Center

Mississippi Department of Wildlife, Fisheries & Parks  
Mississippi Museum of Natural Science

## ARCHITECTURE & CONSTRUCTION

Upchurch Plumbing

## ARTS AV TECHNOLOGY & COMMUNICATIONS

Mississippi School of the Arts

## BUSINESS MANAGEMENT & ADMINISTRATION

Mississippi Army National Guard  
Education & Training  
Mississippi Valley State University  
Delta Alliance

## ENERGY

American Nuclear Society Mississippi, Mississippi Section  
Entergy  
Engineering  
Baxter  
USG

## ENGINEERING

Baxter  
USG

## FINANCE

CB&S Bank  
Guaranty Bank  
Planters Bank & Trust  
Regions Bank  
Southern Bancorp  
Trustmark  
Hope Credit Union

## GOVERNMENT & PUBLIC ADMINISTRATION

Mississippi Economic Council  
WIN Job Center - MS Department of Employment Security

## HEALTH SCIENCE

Delta Health System - The Medical Center  
Mississippi State Department of Oral Health

## HOSPITALITY & TOURISM

Harlow's Casino Resort & Hotel  
Trop Casino Greenville

## HUMAN SERVICES

Life Help Region 6  
Mississippi Organ Recovery Agency

## LAW, PUBLIC SAFETY, SECURITY & CORRECTIONS

Greenville Fire Department  
Greenville Police Department  
Washington County Sheriffs Department

## MANUFACTURING

Baxter  
USG

## TRANSPORTATION DISTRIBUTION & LOGISTICS

Mississippi Trucking Association  
Walmart



## SPECIAL RECOGNITION

MAYOR ERRICK SIMMONS  
City of Greenville, MS

### CITY OF GREENVILLE LOGO

KYLA RICE  
Executive Assistant to the Mayor & Public Relations Director  
Office of the Mayor, City of Greenville, MS

MAYOR'S YOUTH COUNCIL VOLUNTEERS  
City of Greenville, MS

## PLANNING TEAM



KAREN SOCK  
P2P Co- Founder & Project Manager  
karensock52@gmail.com | (901) 651-7167 | Biloxi, MS

VIRGINIA PERKINS  
P2P Project Coordinator  
virginial.perkins@gmail.com | (731) 607-9520 | Vicksburg, MS

TERRI FRENCH,  
Exhibitor Services Manager  
Convention Display Service  
terri@cds1958.com | (601) 519-2194 | Jackson, MS

## LAYOUT EDITOR



FARRAH UNDERWOOD  
D Wilson & Associates  
(228) 697-5676 | Gulfport, MS



[www.pathways2possibilities.org](http://www.pathways2possibilities.org)



Amanda Elzy Junior High  
 Bayou Academy  
 Cleveland Central Middle  
 Coahoma Co. Jr./Sr High  
 Coleman Middle  
 Deer Creek School  
 Drew Hunter Middle  
 Greenville Christian School  
 Greenwood Middle  
 Indianola Academy  
 J.Z. George High  
 Leflore Legacy Academy  
 Leland School Park  
 Manchester Academy  
 Moorhead Central School  
 Northside High School  
 O.M. McNair Middle  
 O'Bannon High

Quitman County Middle  
 Riverside High  
 Robert L. Merritt Jr. High  
 Ruleville Middle  
 Sharkey-Issaquena Academy  
 Shaw High School (7-12)  
 Simmons Junior High  
 St. Joseph Catholic School  
 T.L. Weston Middle  
 Tunica Middle School  
 Unity Christian Academy  
 Vicksburg Junior High School  
 W.A. Higgins Middle  
 Warren Central Junior High  
 Washington School  
 West Bolivar High School (7-12)  
 Yazoo County Middle School





*"Understand that the right to choose your own path is a sacred privilege. Use it. Dwell in possibility."*

*~ Oprah Winfrey*

